

Price Quote for
Lewis Road Culvert over the Elliot Branch of the Smith Drain
Culvert Replacement
0.5 Miles North of Millington Road
Tuscola County
Board of County Road Commissioners

1733 S. Mertz Rd.
Caro, MI 48723

Letting Date – September 1st, 2022 8:30am

Contractor: _____

Address: _____

Sign & Print: _____

Date: _____

Phone & Fax _____

Email: _____

- Lewis Road Culvert over the Elliot Branch of the Smith Drain
LSUM Price \$ _____
Arbela Township
Culvert Installation of 54' of 60" C.S.P with Metal Headwall

Project Completion Date: October 20th, 2022

Signed Insurance and Agreement shall be enclosed.

Tuscola County
Road Commission
Price Quote
For
Lewis Road Culvert Replacement over the Elliot Branch of the Smith Drain

Bid Submittal

Bids are to be submitted on the Road Commission forms in a plainly marked and sealed envelope. No electronic bids will be accepted. Specifications are available online at www.tuscolaroad.org. Please contact Brent Dankert, Tuscola County Highway Engineer at 989-233-7472 or highwayengineer@tuscolaroad.org with any questions. No faxed bids accepted. Any addenda must be noted and initialed.

If you are interested in bidding and have downloaded plans from the website, please email highwayengineer@tuscolaroad.org to be added to the plan holders list to receive any addendums.

The Contractor has examined the proposal, permits, plans, and the location of the work described here in and is fully informed as to the nature of the work and the conditions relating to its performance.

General:

This project includes the removal and replacement of the culvert on Lewis Road over the Elliot Branch of the Smith Drain. The new culvert materials including the 60" CSP culvert, headwalls and associated hardware, will be provided by the Tuscola County Road Commission. Geotextile fabric will not be included with the Culvert materials. The quantities on the plan sheets are estimated quantities and differing quantities will need to be discussed with the engineer before work begins.

The Contractor hereby proposed to furnish all necessary labor, equipment, and materials to complete the work called out and shown on the plan sheets, for the lump sum price listed, herein described in strict accordance with the requirements of the Michigan Department of Transportation 2020 Standard Specifications for Construction, and/or such other special provisions and supplemental specifications as may be listed or attached to this proposal.

Construction:

Work Schedule:

Contract completion is scheduled for October 20th, 2022, unless arranged with Engineer. Once work begins it must continue until the project is completed. Liquidated damages may be assessed at a rate of \$100.00 per day at the discretion of the Engineer.

Tuscola County
Road Commission
Price Quote
For

Lewis Road Culvert Replacement over the Elliot Branch of the Smith Drain

Utility Coordination:

The Contractor is responsible for coordinating all utility relocations as needed. Attached is a list of the contact information for the utilities on site. **Note: Miss Dig must be contacted 72 hours prior to start of work.**

Staking and Material Testing:

The Tuscola County Road Commission will provide construction staking, inspection, and material testing on the project. The contractor shall provide 48 hours advance notice prior to facility scheduling of the work.

Items of Work bolded and italicized have an attached special provision.

Material Delivery

The contractor is responsible for coordinating all culvert material delivery to the site. The contractor shall provide 2 weeks advance notice to the Tuscola County Road Commission to deliver the culvert materials. The Tuscola County Road Commission will coordinate with Jensen for the delivery, however, the contractor will be responsible for offloading all materials on site on the agreed delivery date.

Material Tickets:

Material tickets for concrete, HMA, aggregate, and backfill shall be provided by the contractor to the Tuscola County Road Commission.

Clearing:

Clearing has not been completed. The contractor is responsible for all tree removal within the project limits and any minor brush removal necessary. All costs are to be included in other items of work.

Culvert Installation:

Installation of the culvert shall be in accordance with the attached shop drawings and plans. All work shall be performed in accordance with Section 401 of the 2020 MDOT Standard Specifications for Construction.

Removal and Disposal of Existing Culvert

All costs associated with the removal and disposal of the existing culvert shall be included in the lump sum bid price.

Tuscola County
Road Commission
Price Quote
For

Lewis Road Culvert Replacement over the Elliot Branch of the Smith Drain

Bypass Pumping and Dewatering

Bypass pumping and dewatering may be required to install the culvert. All costs necessary to perform the installation of the structure in dry conditions should be included in the lump sum bid price.

Backfill:

All backfill material within the 1 on 1 influence of the road shall meet requirements of MDOT 2020 Standard Specifications for Construction for Class II Granular Material. All backfill shall be compacted to meet MDOT Density and Inspection Manual requirements. All costs associated with backfill materials shall be included in the lump sum price bid.

Aggregate Base:

Material shall meet requirements of Section 902 MDOT 2020 Standard Specifications for Construction. Gravel shall be 6" of 22A Limestone or Natural Gravel placed and compacted accordingly. Aggregate base must be graded to within 4" (+/- 1/2") of finished HMA surface and compacted to meet MDOT Density and Inspection Manual requirements. Aggregate base must extend out beyond proposed shoulder (approximately 32' total width). See attached typical cross section for details. All costs associated with aggregate shall be included in the lump sum price bid.

HMA:

The HMA will be placed by the Tuscola County Road Commission.

Shoulder, CI II:

The shoulder will be placed by Tuscola County Road Commission.

Rip Rap Plain

Rip rap shall meet requirements of Section 813 MDOT 2020 Stand Specifications for Construction. Rip rap must be placed on geotextile fabric. All cost associated with Rip Rap Plain shall be included in the lump sum price bid. The estimated quantity of rip rap necessary shall be 20 square yards (10 square yards at each end).

Ditch Cleanout/Realignment

All ditching, ditch cleanout and realignment shall be completed in accordance with the requirements of the Tuscola County Drain Commission and the Tuscola County Road Commission. All costs associated with ditch cleanout/realignment shall be included in the lump sum price bid.

Tuscola County
Road Commission
Price Quote
For
Lewis Road Culvert Replacement over the Elliot Branch of the Smith Drain

Slope Restoration:

Slope Restoration should be completed in accordance with the Michigan Department of Transportation 2020 Standard Specifications for Construction, the *attached Special Provision*, and as modified here. The contractor is responsible for maintaining/repairing the site until permanent vegetation is established. A retainer of up to 10%, at the Engineer's discretion, of the project cost will be held until the project has permanent vegetation. All cost associated with slope restoration shall be included in the lump sum price bid.

Soil Erosion and Sediment Control

Soil Erosion and Sediment Control (SESC) shall be the responsibility of the contractor and be completed in accordance with the requirements of the Tuscola County Drain Commission and the Tuscola County Road Commission. SESC measures shall be completed in accordance with the Tuscola County Drain Office permit approved for this project. All costs associated with SESC measures shall be included in the lump sum price bid. This includes, but is not limited to, silt fence, check dams, sediment traps, temporary seeding, etc.

Sign Removal and Salvage

The removal, salvage, and reinstallation of any street signs will be performed by the Tuscola County Road Commission.

Maintaining Traffic:

Temporary Traffic Control required to close Lewis Road shall be provided by and maintained by the Tuscola County Road Commission. The contractor is required to maintain the barricades to block access across the structure on the weekends and after work is complete every night. The contractor is responsible for the project site and shall provide any additional measures needed to separate the public from the work zone. All costs for maintaining traffic control shall be included in the lump sum price bid.

Documents Attached:

- Utility Coordination
- Special Provision – Slope Restoration, Modified
- Lewis Road Detour
- Detour Signs
- Typical Cross Section
- Approved Shop Drawing

Tuscola County
Road Commission
Price Quote
For

Lewis Road Culvert Replacement over the Elliot Branch of the Smith Drain

- Tuscola County Drain Permit
- Title IV Compliance
- Tile VI Compliance
- Agreement

Payment and Paperwork:

Liability:

The Contractor, shall at all times, exercise extreme care and shall assume all liability for any damages resulting from his operation and shall hold the Tuscola County Road Commission harmless from any such claims or damages.

The successful bidder must also furnish certificates for policies giving satisfactory evidence of insurance coverage to the minimum extent of \$500,000.00 property damage and \$1,000,000.00 personal liability to insure adequate payment for any damage caused by his operations.

The Contractor shall, prior to the start of work, file with the Tuscola County Road Commission a certificate that he carries Workmen's Compensation Insurance.

All invoices MUST include the TCRC job number and project location.

Payment:

These projects are quoted on a "NOT TO EXCEED" total basis for all work necessary to complete each project. Payment shall be made by the Tuscola County Road Commission upon receipt of site-specific invoice. Invoice shall be accompanied by all necessary material tickets. The lump sum amount bid shall be payment in full for all labor, materials, and equipment needed to accomplish the work.

NON-COMPLIANCE WITH PROJECT SPECIFICATION PROVISIONS:

Any variation from the specifications of the project herein without written approval from the Tuscola County Road Commission and/or its authorized representative may result in, at the discretion of the Road Commission, the voiding and/or canceling of the acceptance of any bid and/or contract, resulting from this project.

The Board reserves the right to accept or reject any or all proposals and to re-advertise or to accept the proposal that, in their opinion, is in the best interest of Tuscola County.

TUSCOLA COUNTY ROAD COMMISSION

NOTICE TO BIDDERS FOR UTILITY COORDINATION

TCRC

1 of 2

8/26/2020

The contractor shall cooperate and coordinate activities with the owners of utilities as stated in Section 104 of the 2012 MDOT Standard Specifications for Construction. In addition, for the protection of underground utilities, the contractor shall follow the requirements in Section 107.12 of the 2012 MDOT Standard Specifications for Construction. **Utility coordination will not be paid for separately and will be included in other items of work.**

PUBLIC UTILITIES

Refer to the project Plans for the contact information for public utilities that are located within the Construction Influence Area (CIA).

For the protection of underground utilities and in conformance with Public Act 174 of 2013, the Contractor shall contract the Miss Dig system, Inc. by phone at 811 or (800) 482-7171 or via the web at either elocate.missdig.org for single address or rte.missdig.org, a minimum of 3 business days prior to excavation, excluding weekends and holidays.

The Plans identify the utilities that are required to be relocated or abandoned by others. Contact information for all utilities reflected on these plans is below:

Wolverine Telephone Co.

Attn: Bill Bouman
465 N. Franklin
Frankenmuth, MI 48734
Office (989) 817-5101
Email: William.bouman@tdstelecom.com

Consumers Energy

Attn: Kyle Skrabut
2400 Weiss St.
Saginaw, MI 48602
Office (800) 477-5050
Email:
Kyle.skrabut@cmsenergy.com

DTE Energy

Attn: Sara Kipp
Phone: (313) 235-5824
One Energy Plaza, 518 SB
Detroit, MI 48226
Email:
sara.force@dteenergy.com

Owners of public utilities will not be required to move poles or structures not already identified in the Plans to be relocated, in order to facilitate the operation of construction equipment, unless it is determined by the Project Engineer that such poles or structures constitute a hazard to the public or are extraordinarily dangerous to the Contractor's operations. **If the Contractor determines that additional relocations will be required in order to facilitate the operation of construction equipment for completion of this project, the Contractor shall notify the Engineer and the Public Utility in writing, no later than 10 calendar days after award.**

The Contractor shall coordinate with Public Utility companies to relocate any facilities required to accommodate the proposed scope of work, at no additional cost to the Owner.

Underground electrical, cable, phone, and gas services may exist throughout the project limits. **The Contractor shall be prepared to work with these utility companies to coordinate necessary relocations if additional conflicts arise.** The private utility owner is responsible for costs, equipment, and labor to relocate their utilities as shown on the plans, or as deemed necessary by the Engineer.

MICHIGAN
DEPARTMENT OF TRANSPORTATION

SPECIAL PROVISION
FOR
SLOPE RESTORATION, NON-FREEWAY

RSD:JLB

1 of 3

APPR:DMG:KJS:05-13-20

a. Description. This work consists of preparing all lawns and slopes on non-freeway projects designated for slope restoration on the plans or as directed by the Engineer and applying topsoil, fertilizer, seed, mulch with mulch anchor, mulch blanket, high velocity mulch blanket and permanent turf reinforcement mat to those areas. Ensure turf establishment is in accordance with section 816 of the Standard Specifications for Construction and Standard Plan R-100 Series, except as modified herein or otherwise directed by the Engineer.

b. Materials. The materials and application rates specified in sections 816 and 917 of the Standard Specifications for Construction apply unless modified by this special provision or otherwise directed by the Engineer. Use the following materials on this project:

1. Seeding mixture as called for on the plans.
2. Fertilizer, Chemical Nutrient, Class A.
3. Topsoil Surface, Furnished or Salvaged, 4 inch. Remove any stones greater than 1/2 inch in diameter or other debris from all topsoil.
4. Mulch and Mulch Anchoring, Mulch Blanket and/or High Velocity Mulch Blanket.
5. Permanent Turf Reinforcement Mat (TRM) must be 100 percent synthetic and consist of 100 percent ultraviolet (UV) stabilized polyolefin fibers sewn between two layers of black UV stabilized polypropylene netting with polyolefin thread. The TRM must meet the following "minimum average roll value" requirements:

<u>Property</u>	<u>Test Method</u>	<u>Requirement</u>
Mass/Unit Area	ASTM D6566	10 oz/syd
Ultraviolet Stability @ 1000 hrs	ASTM D4355/D4355M	80 percent
Tensile Strength (MD)	ASTM D6818	165 lbs/ft

Acceptance. Supply a Test Data Certification for the permanent TRM from one of the following manufacturers or approved equal:

Recyclex - American Excelsior Co., Arlington, TX (800) 777-7645
P300 - North American Green, Poseyville, IN (800) 772-2040
Landlok 450 - Propex, Inc., Chattanooga, TN (800) 621-1273
PP5-10 - Western Excelsior, Mancos, CO (800) 833-8573

c. Construction. Ensure construction methods are in accordance with subsection 816.03 of the Standard Specifications for Construction. Begin this work as soon as possible after final grading of the areas designated for slope restoration but no later than the maximum time frames

stated in subsection 208.03 of the Standard Specifications for Construction. It may be necessary, as directed by the Engineer, to place materials by hand.

Shape, compact and assure all areas to be seeded are weed free prior to placing topsoil. Place topsoil to the minimum depth indicated above, to meet proposed finished grade. If the area being restored requires more than the minimum depth of topsoil to meet finished grade, fill this additional depth using topsoil or, at the Contractor's option, embankment. Furnishing and placing this additional material is included in this item of work.

Ensure topsoil is weed and weed seed free and friable prior to placing seed. Remove any stones greater than 1/2 inch in diameter or other debris. Apply seed mixture and fertilizer to prepared soil surface. Incorporate seed into top 1/2 inch of topsoil.

Apply mulch at a rate of 2 tons per acre. Place mulch anchoring over the mulch at a rate specified in subsection 816.03.F of the Standard Specifications for Construction. Place mulch blanket and high velocity mulch blanket in accordance with subsection 816.03.G of the Standard Specifications for Construction and as shown on Standard Plan R-100 Series.

Install areas constructed with the TRM on prepared (seeded) grades as shown on the plans in accordance with the manufacturer's published installation guidelines. Anchor the top edge of the TRM in a minimum 6 inch deep trench. Operation of equipment on the slope is prohibited after placement of the TRM. No credit for splices, overlaps, tucks or wasted material will be made.

If an area washes out after this work has been properly completed and approved by the Engineer, make the required corrections to prevent future washouts and replace the topsoil, fertilizer, seed and mulch. This replacement will be paid for as additional work using the applicable contract pay items.

If an area washes out for reasons attributable to the Contractor's activity or failure to take proper precautions, replacement will be at the Contractor's expense.

The Engineer will inspect the seeded turf to ensure the end product is well established, in a vigorous growing condition, and contains the species called for in the seeding mixture.

If the seeded turf is not well established at the end of the first growing season, the Contractor is responsible to re-seed until the turf is well established and approved by the Engineer.

If weeds are determined by the Engineer to cover more than 10 percent of the total area of slope restoration, the Contractor must provide weed control in accordance with subsection 816.03.I of the Standard Specifications for Construction. Weed control will be at the Contractor's expense with no additional charges to the project.

d. Measurement and Payment. The completed work, as described, will be measured and paid for at the contract unit price using the following pay items:

Pay Item	Pay Unit
Slope Restoration, Type ____	Square Yard

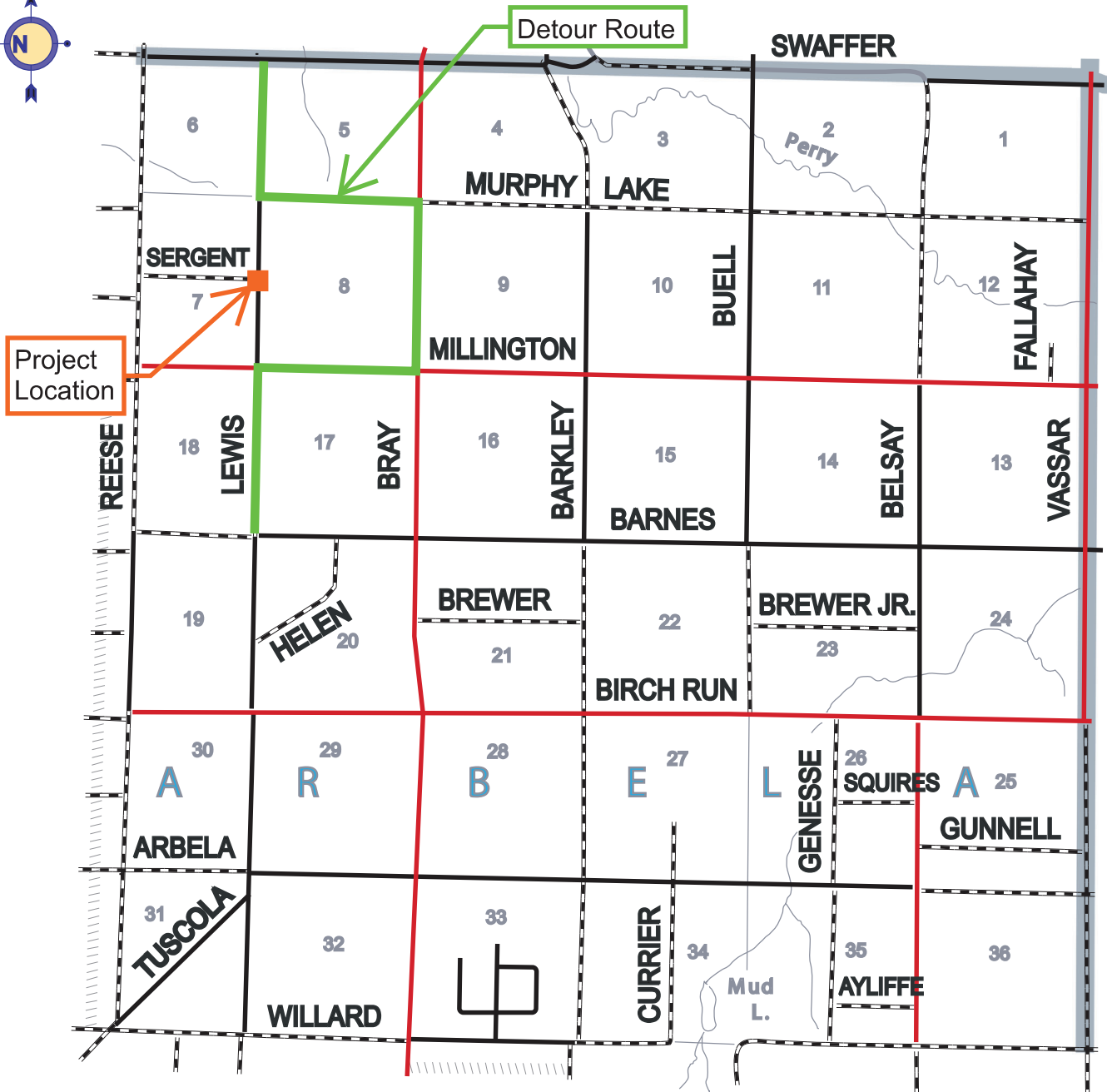
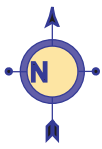
1. Place **Slope Restoration, Type A** in all areas not described in the other types of slope restoration and will be measured by area in square yards in place. **Slope Restoration, Type**

A includes installing topsoil surface, furnished or salvaged; fertilizer, chemical nutrient, class A; seeding mixture; and mulch and mulch anchoring.

2. Place **Slope Restoration, Type B** parallel (8 feet minimum) to the edge of the roadway, in areas that have a 1 on 3 slope and in any ditch with a grade less than 1.5 percent, or as directed by the Engineer. **Slope Restoration, Type B** will be measured by area in square yards in place. **Slope Restoration, Type B** includes installing topsoil surface, furnished or salvaged; fertilizer, chemical nutrient, class A; seeding mixture; and mulch blanket.

3. Place **Slope Restoration, Type C** in areas that have a 1 on 2 slope, any ditch with a grade of 1.5 percent to 3 percent or as directed by the Engineer. **Slope Restoration, Type C** will be measured by area in square yards in place. **Slope Restoration, Type C** includes installing topsoil, furnished or salvaged; fertilizer, chemical nutrient, class A; seeding mixture; and high velocity mulch blanket.

4. Place **Slope Restoration, Type D** in areas that have a slope steeper than 1 on 2, any ditch with a grade steeper than 3 percent or as directed by the Engineer. **Slope Restoration, Type D** will be measured by area in square yards in place. **Slope Restoration, Type D** includes installing topsoil, furnished or salvaged; fertilizer, chemical nutrient, class A; seeding mixture; and TRM.



ARBELA TOWNSHIP



R11-2
48" x 30"



TYPE III - 8 FT
BARRICADE - DOUBLE SIDED, LIGHTED

1



R11-4
60" x 30"



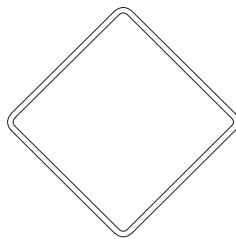
TYPE III - 8 FT
BARRICADE - DOUBLE SIDED, LIGHTED

2



R11-3
60 x 30"

3



4



M4-10
48" x 18"

5



W20-1 6 REQ'D
48" x 48"

6



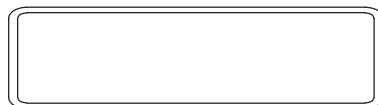
W20-3 2 REQ'D
48" x 48"

7

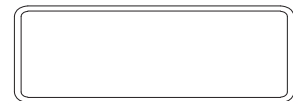


W20-2 2 REQ'D
48" x 48"

8



9



10



M4-9
RIGHT

30" x 24"

11



M4-9
LEFT

12



M4-9
UP

13



M4-8a 2 REQ'D
24" x 18"

14

1



R11-2 0 REQ'D
48" x 30"

2



W20-3 2 REQ'D
48" x 48"

3



W20-2 2 REQ'D
48" x 48"

4



R11-4
60" x 30"

5



M4-10 1 REQ'D (LEFT)
48" x 18" 1 REQ'D (RIGHT)

6



M4-9
2 REQ'D (RIGHT)
2 REQ'D (LEFT)
12 REQ'D (UP)
30" x 24"

7



M4-8a 2 REQ'D
24" x 18"

8



D3-2a 4 REQ'D
VARIABLE (48" x 18")

9



W20-1 6 REQ'D
48" x 48"

10



G20-2 2 REQ'D
60" x 24"

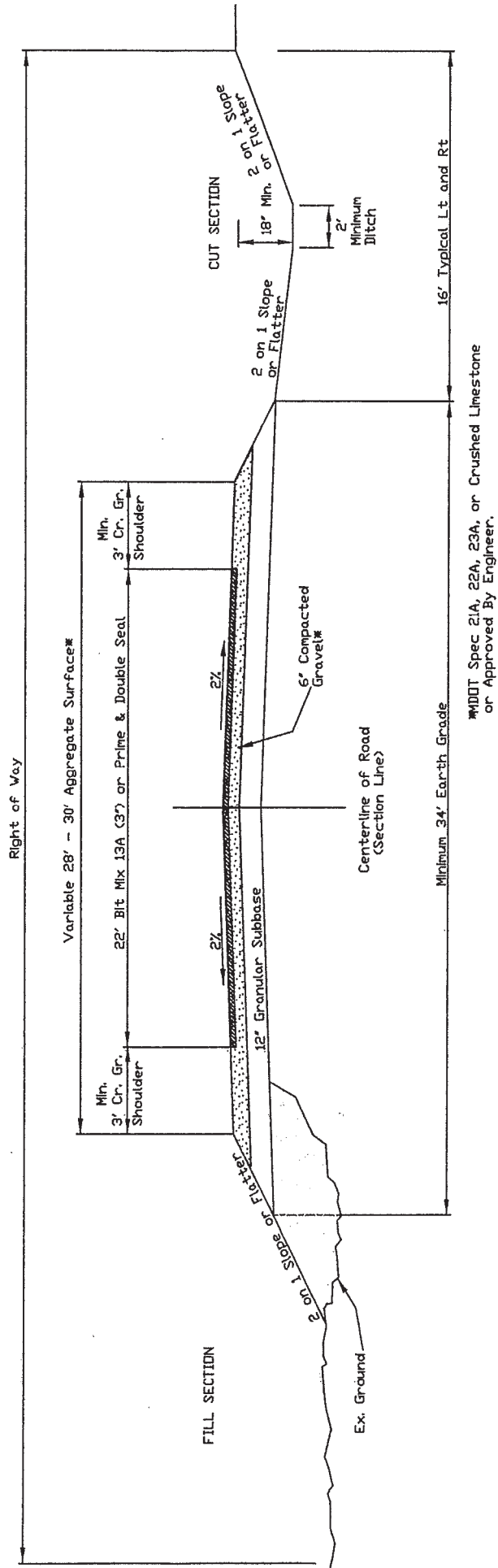
11



G20-SPECIAL 2 REQ'D
72" x 54"

A

8 FT BARRICADE, TYPE III,
HIGH INTENSITY,
DOUBLE SIDED, LIGHTED



TCRC
STANDARD CROSS SECTION

DATE: 8/24/2006
Board Approved



BRIDGE AND SUPPLY COMPANY
400 Stoney Creek Dr., P.O. Box 151, Sandusky, MI 48471
(810) 648-3000, Fax: (810) 648-3549
9610 County Road 14, Wauseon, Ohio 43567
(419) 335-3200, Fax: (419) 335-3201

QUOTATION

TO:

TUSCOLA COUNTY ROAD COMMISSION
1733 S. MERTZ RD.
CARO, MI 48723

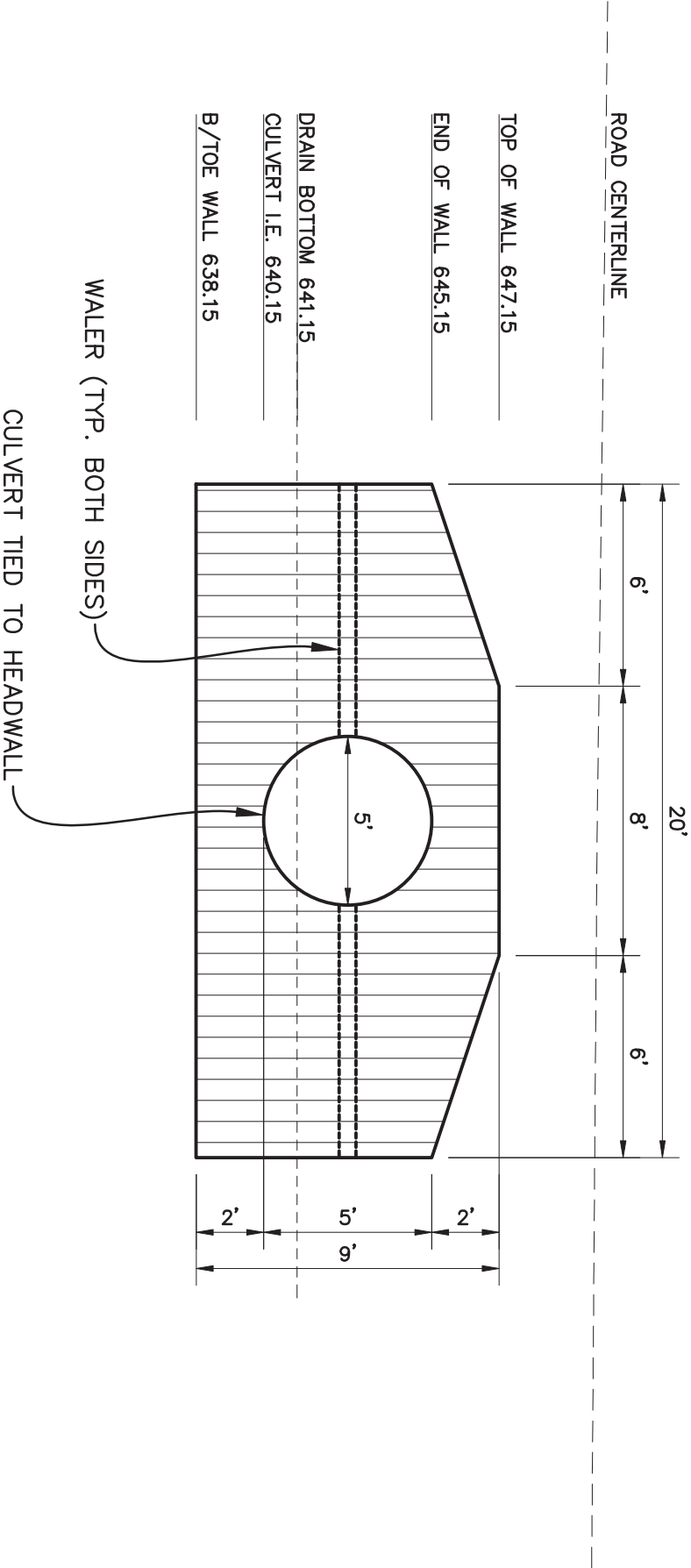
SHIP TO:

TUSCOLA COUNTY ROAD COMMISSION
LEWIS RD & SERGENT RD
BIRCH RUN, MI 48415

ATTN: SCOTT RAYMER

Quote No.	Date	Cust No	Sales Person	Job Name	Delivery	Expiration
0005527	3/11/2022	100821	TINA POZSGAY	LEWIS RD		30 DAYS
Item	Quantity	UM	Part	Description	Price \$	Extension \$
001	5.00	FT	1PC2PO10GA60	60" CSP 10GA 2-2/3 POLY Pc(s): 1 Lgth: 5' 0" PART OF 54' RUN		
002	49.00	FT	1PC2PO10GA60	60" CSP 10GA 2-2/3 POLY Pc(s): 1 Lgth: 49' 0" PART OF 54' RUN		
003	1.00		1BOM12GA60X24STPG	60"X24 MDOT 12GA POLY BAND KIT		
004	1.00		5527 - HEADWALL	20'x9' GALV STEEL HEADWALL 8GA FOR 1 END OF 60" PIPE ABOVE UNASSEMBLED MATERIAL ONLY Total Weight: 5,254.20 Total for Quote \$		
<p>The above prices include delivery to your job site.</p> <p>Pricing will remain firm for 30 days.</p> <p>Thank you for the opportunity to quote you on this project. We hope to be of service to you in the near future.</p> <p>Sincerely,</p> <p>Tina Pozsgay, Sales Representative Mobile: 810-404-5835 Email: tinap@jensenbridge.com</p>						

Lewis Road & Sergeant Road Headwall Detail



FOR:		TUSCOLA COUNTY ROAD COMMISSION		Job No.: 2101.13	
TITLE:		Lewis Road over Elliot Branch of the Smith Drain		DATE:	
DRAWN		PRP		03-02-2022	
BY:		PRP		PAGE: 1	
CHECKED		PRP		OF: 1	
BY:		PRP		APPROVED:	
PRP		PRP		SCALE: 1" = 5'	

TUSCOLA COUNTY DRAIN COMMISSIONER'S OFFICE

DRAIN PERMIT

Property Tax ID # N/A

Permit # S-016.308

The Tuscola County Drain Commissioner, first party, under authority granted by the Drain Code, does hereby consent to the construction, installation, operation and maintenance by the **Tuscola County Road Commission, 1733 Mertz Road, Caro, Michigan**, Applicant/second party, of a **CROSSING**, herein called a facility, in, on, under, through or across the **Smith & Branches (Elliot Branch) Drain**, located in the Township/City/Village of **Arbela**, Tuscola County, Michigan on the following terms and conditions:

1. Contractor to contact Miss Dig at least 3 days prior to construction.
2. All work done in connection with said drain shall be done in a responsible manner by a Drain Commissioner's Office, approved contractor. Said drain shall be left in as good condition and as near the same contour, bank slopes, bottom width, depth, slope, etc as possible upon completion of said construction as existed prior hereto. All work will be done on the applicant's land and no work will be done on the land of others.
3. This work will be done only to install, replace or repair a private driveway, uncovering tile and removing obstructions from the drain, unless otherwise noted in items #13 and #14. This permit is **NOT** to be used to do a full cleanout of a drain.
4. **NO** work will be done within 50 feet of bordering property unless written permission from that property owner is submitted with this permit.
5. **NO** work will be done within 50 feet of an existing public transportation right-of-way (i.e. county road, railway, etc.), without the written permission or permit of the appropriate public agency. Copies of these shall be submitted with this permit.
6. Drainage shall be maintained and left unobstructed during and after construction so as to prevent the backing up of water, which would cause flooding of adjacent land.
7. Second party agrees to assume all costs of this permit construction and liability for any loss or damage sustained by any person or property as a result of operations performed under this agreement. The engineering, legal, and construction costs to repair these damages will lie solely on the Applicant and this Applicant/second party agrees to pay for these costs incurred as a result of this construction.
8. Second party agrees to notify first party 48 hours prior to the commencement of work herein described, so, if decided necessary by the first party, an inspector can be present while the work is in progress.
9. It is the responsibility of the second party to secure any additional permits from pertinent local, state (MDEQ –Bay City office 989-894-6200) and federal agencies as required prior to the commencement of construction of said crossing.
10. Under the provisions of Part 91, Soil Erosion and Sedimentation Control, of the Natural Resources and Environmental Act, of 1994 PA 451, all work involving an earth change must provide for control of soil erosion and protection of state waters from sedimentation. Construction operations will be scheduled with erosion control in mind. When required, temporary erosion control measures must be completed before starting work and then inspected and kept effective throughout the construction period. Permanent soil erosion control measures will be completed within 5 days after final earth change has been completed on any reach or portion. Channel slope worked on shall be fertilized, seeded daily and grass established. Original seed tags will be submitted prior to final inspection.

11. **Applicant/contractor will supply proof of liability insurance** and release Tuscola County, appropriate township/village, the Tuscola County Drain Office and its' employees, Drainage District and Drain Commissioner from liability during this permit.
12. Photos of before and after construction should be taken and maintained by the applicant and kept with this permit.
Location, size, & length of facility (i.e. 200' upstream of Smith Rd)

Replace existing culvert with Polymer Pre-Coated (10 Gauge) 54' of 60" CSP with 24" tall Head Walls & Wing Wall under Lewis Road at the intersection of Sergeant Road. Location is between Sections 7 and 8 of Arbela Township, Tuscola County carrying the waters of the Smith & Branches (Elliot Branch) Drain.

Additional conditions:

Road Commission is an Authorized Public Agency (APA) by MDEQ; Road Commission engineer to perform final inspection. Permit applied for under non-301 requirements

13. Upon completion of work under this agreement the Applicant or Contractor is required to contact the Tuscola County Drain Office (989-672-3820) for final inspection of the work performed. This work will need to meet all requirements needed for a professional engineer to approve. If work is not approved, then the applicant may be liable for all costs to correct the work. This may include any construction, engineering, legal or other costs associated with correcting this work. Furthermore, the Applicant shall satisfy all Completion Requirements as listed in the Final Inspection below.
14. Tuscola County Road Commission should be contacted if working in a road right-of-way.
15. The crossing becomes the responsibility of the property owner to maintain and repair. Obstructions in a county maintained drain will be removed at the cost of the property owner. Obstructions are defined as lessening of the area of a drain. Drain Code of 1956, PA 40 of 1956, as amended.

Applicant _____

Contractor _____

Address _____

Address _____

City/Twp _____

City/Twp _____

Telephone _____

Telephone _____

Date _____

Date _____

Signature _____

Signature _____

Witness _____

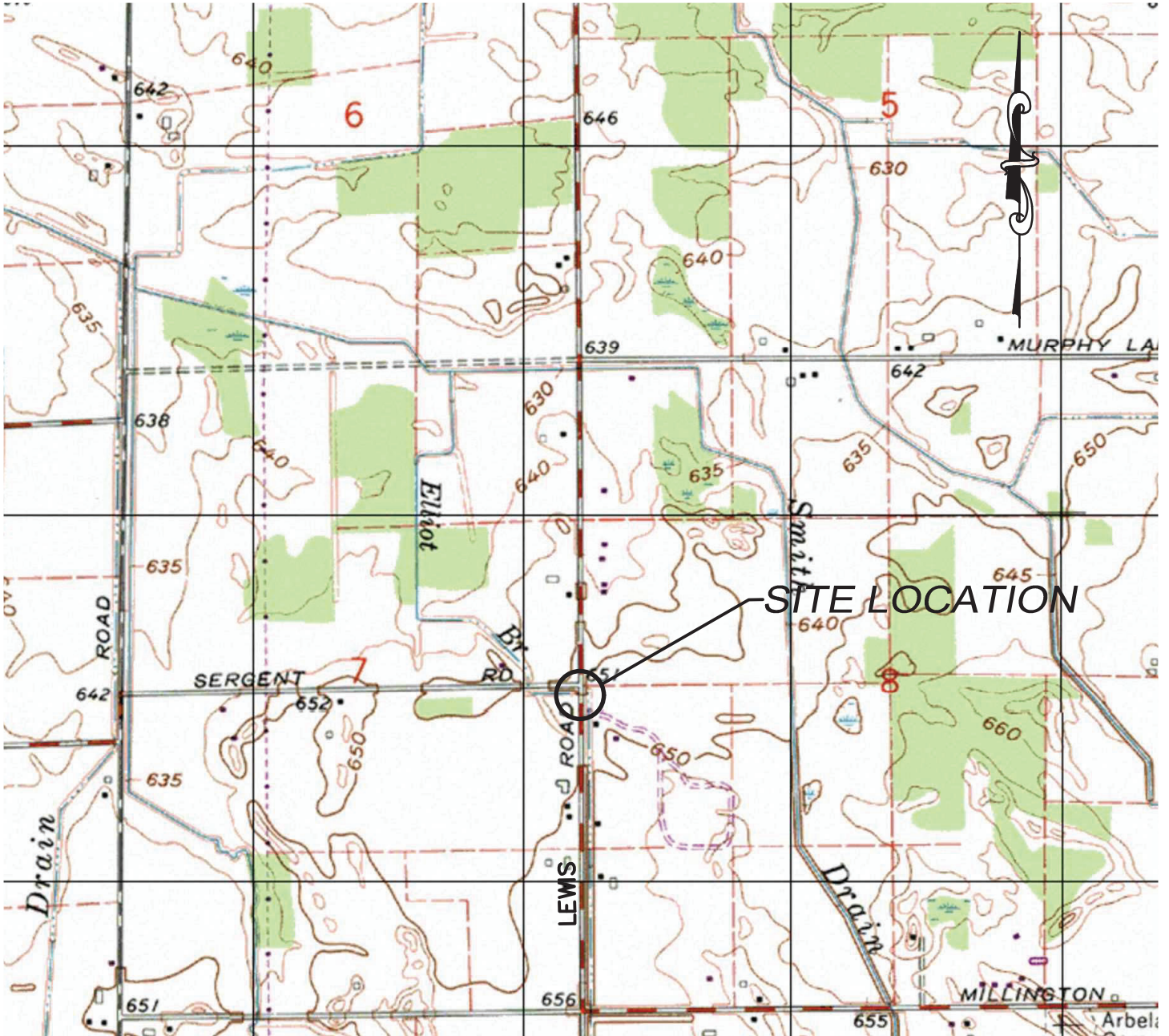
Witness _____

Drain Office Approval By _____ Date _____

Robert J. Mantey, Tuscola County Drain Commissioner

**** THIS PERMIT EXPIRES ONE YEAR FROM APPROVAL DATE****

INSPECTION COMMENTS



FOR:

TUSCOLA
COUNTY
ROAD
COMMISSION



Job No.: 2101-13

TITLE: Lewis Road over Elliot Branch of the
Smith Drain

DRAWN
BY: BEN

DATE:
02-13-2021

CHECKED
BY: PRP

PAGE: 1
OF: 7

LOCATION: Lewis Road Cross Culvert Elliot Branch of the
Smith Drain ±25' South of Sergeant Rd, Arbel Township,
T10N-R7E Section 7& 8, Tuscola County, Michigan

APPROVED:
PRP

SCALE:
1" = 1320'